

NEWSNOTE

FROM THE PRINCIPAL’S DESK...

Dear SME Families,

With PK and Kindergarten Moving Up and Graduation ceremonies just five weeks away and drafts of our final exam schedule nearing finalization, it’s safe to say we are officially in our final stretch of the school year! Some brief odds and ends to share as we begin May:

~ This Friday’s school mass is a Christian Witness Mass. We will be recognizing students and teachers who demonstrated the virtue of justice. Simply put, those who demonstrate justice are fair and give others their due. Those who seek and work for justice help ensure that all feel welcome at SME and build our community.

~ I encourage all to visit our Art Fair, Battle of the Books, and Spring Open House. Please remember - this is an open house and an opportunity for prospective families to meet our staff and not a parent-teacher conference day. If you would like a formal meeting with your son’s or daughter’s teacher, please reach out to schedule one with her directly.

~ Due to numerous requests, we are extending the STREAM Flower Sale until Friday. Due to delivery time, Friday is a hard deadline. If interested in ordering flowers, please submit your order by the end of this week.

~ We have added an SME Color Run this year! This event is new to St. Mary’s and is assured to be a fun time!

See you tomorrow evening,
Mr. O



- **Thurs. 5/1** - ART Show, Battle of the Books & Book Fair, 6pm-8pm
- **Fri. 5/2** - Christian Witness Mass, 8:30am
- **Tues. 5/6** - NYS Science Testing
- **Fri. 5/9** - May Crowning Mass, 8:30am & Penny Fair
- **Tues. 5/13** - NYS Math Testing
- **Wed 5/14** - NYS Math Testing
- **Fri. 5/16** - Hope Ribbon Mass, 8:30am
- **Fri. 5/23** - No School
- **Mon. 5/26** - No School
- **Tues. 5/27** - Color Run, 5:30pm

STREAM FLOWER SALE

Our annual STREAM Flower Sale is coming to an end this Friday, May 2nd. You’ll be able to view, place and pay for your order via Cheddar Up!

A variety of flowers will be available in 4.5” pots with a buy 5 get 1 free deal. There are also hanging baskets available. NEW this year: Patio Tomatoes! Delivery will be Thursday, May 8th at the Parish Center Doors.

COLOR RUN VOLUNTEERS

Our Color Run event will be a fun-filled event designed to promote wellness, community spirit and of course a splash of color all while helping our STREAM program.

To make this event a success, we are looking for volunteers to help us out.

If interested, please use the link below to sign up.

<https://www.signupgenius.com/go/10C094EAEAA23A6F5C70-56582581-color#/>



HSA

Scholastic Book Fair

Our Spring Book Fair will be held this Thursday (5/1)! Students in grades 1-8 are currently scheduled to shop with their class during the school day. The Book Fair will also be open to everyone from 6-8pm on 5/1, in conjunction with our Open House.

Cash, credit cards, checks (payable to the school) and eWallets are all acceptable methods of payment. Need to set up an eWallet? Visit our Book Fair Homepage: <https://bookfairs.scholastic.com/bf/stmaryselemschlancaaster>

If you would like to volunteer, please sign up here! <https://spring-2025-book-fair.cheddarup.com>

Teacher Appreciation Week

Join us in celebrating SME Teachers for Teacher Appreciation Week! The HSA is looking for donations of desserts for the teachers' luncheon on Wednesday 5/7. Please bring desserts to the main office by 9am on 5/7. <https://my.cheddarup.com/c/2025-teacher-appreciation>

Penny Fair

We are excited for our annual Penny Fair, which will be held on Friday 5/9 following Mass!

There will be several games of chance for the students to play, as well as everyone’s favorite tradition, CAKE WALK!

We’ve streamlined the day with a flat \$5 payment per student, rather than sending kids with a bag of quarters to pay at each game, which helps the kids tremendously! Please RSVP using the following form and remit payment electronically or via cash/check to the office by Monday 5/5. <https://penny-fair-2025.cheddarup.com>

Students in grades 1-8 will attend the Penny Fair during the school day. Kindergarten and Pre-K families are invited to attend with their student in the evening from 5:30-7:30pm. There will be pizza, pop and snacks available for purchase in the evening hours, so come hungry.

Volunteers are needed for set up and to facilitate the games during the day, as well as to contribute donations for the Cake Walk prizes. If you are available to help, please sign up for one of the available slots using the Penny Fair Cheddar Up link (hit the "Continue" button to view the sign-ups).

June HSA Events - Save the Dates!

Mega Raffle: 6/6
School Picnic: 6/13

Book Fair Class Schedule				
Thursday	Period	Start Time	End Time	Class
05.01.2025	1HR	7:40	8:16	-----
	2	8:18	8:57	Michalek/Zaidel
	3	8:59	9:36	Teichmann/Cooper
	4	9:38	10:15	Matter
	5	10:17	10:54	6B Blask SH
K,1,2 Lunch	6	10:56	11:33	Grade 7 (Kerns study hall)
3,4,5 Lunch	7	11:35	12:12	Lamb
6,7,8 Lunch	8	12:14	12:51	Maloney
	9	12:53	1:30	6A class (Sullivan study hall)
	10	1:32	2:09	Grimm/Kieffer
	11	2:11	2:20	-----

INSIDE THIS ISSUE:

PRINCIPAL’S DESK	1
FLOWER SALE	1
COLOR RUN	1
UPCOMING EVENTS	1
HSA	1
RAISE RIGHT	2
SWIM TEAM	2
ART NEWS / YEARBOOK	2
NO AFTER SCHOOL	2
SPIRIT WEAR	2
MEGA RAFFLE	2
SCHOOL PLAY	2
BATTLE OF THE BOOKS	2



ST. MARY'S
ELEMENTARY SCHOOL

2 St. Mary's Hill
Lancaster, NY 14086

Phone: 716-683-2112
Fax: 716-683-2134
www.smeschool.com



UPON THIS HILL,
WE DO GOD'S WILL



SPIRIT WEAR

Please use the link below to complete your purchase:

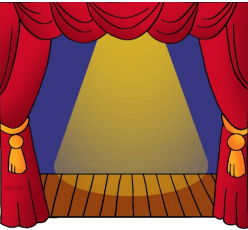
<https://sme-spirit-wear.cheddarup.com>

Once the payment is received, I will send the shirts home with your student or contact you to arrange pick up later this week/early next week.

SCHOOL PLAY - *THE ARISTOCATS*

Join us for an unforgettable experience at our school play on **May 16th and 17th!**

Stay tuned for more details on the exciting performances that await!



MEGA RAFFLE

What would you do with \$35,000??

Buy your Mega ticket for your chance to find out!

When: June 6, 2025 at 7:00PM

Where: St. Mary's High School

The top prize is \$35,000 with 13 other prizes to win.

Cost: \$100.00 a ticket which includes two guests.

Purchase tickets at the link below!

<https://mega-raffle-2025.cheddarup.com>



UNIFORM ORDERS

Uniforms will be available for ordering on a monthly basis! All orders placed within the month-long period will be processed by All-Stars.

Please click the link below to place your order :)

<https://all-stars.printavo.com/merch/stmary-smonthly>



YEARBOOK DISTRIBUTION

Eighth graders - Thursday, May 29th
Kindergarten through seventh grade - Friday, May 30th
Pre K 3 & Pre K 4 - Friday, May 30th or the week of June 2nd

ART ROOM

In conjunction with this year's Open House, St. Mary's Elementary School-Lancaster, will be transformed with an amazing array of artwork by students in PreK3 thru 8th Grade.

Please join us on **Thursday, May 1st** in viewing the talents of the St. Mary's Elementary School students.

Students have worked very hard in ART all year long and they can't wait for you to see their masterpieces. Art work will be on the 1st and 2nd floor -main hallways. Family, friends and neighbors are all welcome!



SWIM TEAM

SME is looking to see if we can field our own swim team next year!

Please fill out the following interest form so we can determine if we can have our own team, or if we need to merge with a closer school.

<https://forms.gle/hcUTnhAKFYXhu3hjZ>

Swim starts early September!

BATTLE OF THE BOOKS

We are bringing back the Battle of the Books event that the school used to hold yearly! BATTLE OF THE BOOKS is a game show-like competition to test student teams' knowledge of two selected books by answering questions. Not all students are required to participate. There are three Battle of the Books divisions - grades 2/3, grades 4/5 and grades 6-8. Teams can have one to five members. The team's members can be from different grades within the division. The team members can each read both books or one reads one while the other reads the other book. Teams should be creative with names, T-shirts, posters etc...

Here are the books per grade division

- Grades 2/3 will read "Magic Treehouse: Buffalo Before Breakfast" by Mary Pope Osborne & "How to eat Fried Worms" by Thomas Rockwell
- Grades 4/5 will read "The BFG" by Roald Dahl & "Mr. Popper's Penguins" by Florence and Richard Atwater
- Grades 6-8 will read "Holes" by Louis Sachar & "The Boy in the Striped Pajamas" by John Boyne

This event will take place in the evening at our Spring Open House on **May 1st** with our Art Show and Book Fair.



NO AFTER SCHOOL

Due to staffing shortages and our Spring Open House, there will be no after school care available on

Thursday May 1st and **Friday May 2nd.**

We apologize for any inconvenience.



RAISE RIGHT

Updated Office Hours:

Monday 12p-2:15p
Tuesday 9a-12p
Wednesday 12p-2:15p

All online and school orders will be checked on Fridays and go home on Monday if inventory allows.

If you have any questions, please email raiserright@smeschool.com.

Our team is here for you!

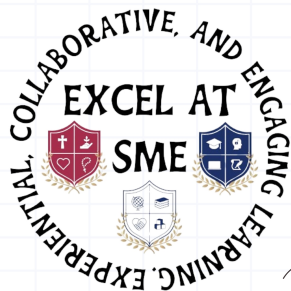


JOIN US FOR THE
ST. MARY'S
ELEMENTARY SCHOOL

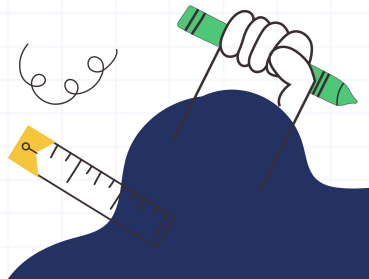
Current and new families are invited to join us for our own SME Art Show, our Battle of the Books competition, and our semi-annual Book Fair.

SPRING
OPEN
HOUSE

THURSDAY, MAY 1
6:00 - 8:00 PM



FOOD TRUCKS
ON SITE & LIGHT
REFRESHMENTS
AVAILABLE.





Our Spring STREAM Flower Sale is here! Thank you for helping us reach our fundraising goal, with the proceeds used to offset the cost of STREAM supplies for our SME students.

We are offering a selection of hanging flower baskets*, patio tomatoes, and a multitude of 4.5 inch potted plants* provided by Mitchell Greenhouses.

*Photos are for reference only, colors vary and you will choose your favorites at pickup.

SPECIAL: Buy 5 pots, get one free! Mix and match any of the 4 1/2 inch pots
Make sure you include the free plant(s) in your order and adjust pricing accordingly.
Hanging baskets are not included in the buy 5 get one free promotion.

Orders and payment due: Wednesday, April 30th.
Pick-Up: St. Mary's Parish Center Thursday, May 8th from 1:00 p.m. - 5:30 p.m.

Please make checks payable to St. Mary's Elementary School with a note of "flower sale."
Check and cash payments must be received by Wednesday, April 30th and may be dropped
of or mailed to:

St. Mary's Elementary School
2 St. Mary's Hill
Lancaster, NY 14086



For questions/concerns, please contact our STREAM Coordinator, Ms. Zaidel at zaidelj@smeschool.com

If you prefer to order online, please check out:

<https://spring-flower-and-plant-sale-87531.cheddarup.com>

Purchaser Information:

Full Name: _____

Email Address: _____

Phone Number: _____

Do you have a student at SME? ☐ YES ☐ NO

If yes, student's name/grade level: _____

How are you affiliated with SME? _____

10 inch Hanging Baskets:

\$25 each

Patio Tomatoes:

\$10 each

<div>10” Combination Hanging Basket</div> <div>3 or 4 different varieties in each basket create very interesting color and texture. Multiple different colors and plant combinations for sun or shade.</div>	<div>1-Gallon Pot Patio Tomatoes</div> <div>Tomato plant planted in a 19 cm, 1-Gallon pot. Produces tomatoes a little larger than grape tomatoes.</div>
--	--

4.5 Inch Potted Plants: \$7 each

Buy 5 Get One FREE

<div>Gerbera Daisies</div> <div>Numerous color and flower styles in the Festival, Jaguar, and Revolution series. Solid dark-eyed and light-eyed blooms. Grow and flower best in full sun with adequate moisture.</div>	<div>Cuphea</div> <div>Commonly known as Mexican Heather. Will grow to a 24” shrub in full sun. Attracts hummingbirds. Loves summer heat. Colors include lavender, white, magenta, purple, and red.</div>	<div>Double Impatiens</div> <div>Fiesta double impatiens. Numerous large rose-like blooms that bloom all season long. Heat tolerant. Filtered sun to part shade. Multiple colors available</div>
<div>Dahlietta</div> <div>Vegetatively propagated dahlias have 2 1/2"-3" fully double flowers. Very uniform in growth habit and numerous flowers. Performs best in full sun. Red, orange, salmon, pink, scarlet, burgundy, white, yellow, and bi-colors</div>	<div>Coleus</div> <div>Kong coleus. Unusual and attractive colors with great texture. Great in landscape, a good replacement for impatiens. Many unusual cutting varieties available. Upright and trailing varieties for shade areas.</div>	<div>Osteospermum</div> <div>Sunscape Daisy. Cold hardy plant that will tolerate spring and fall frost. They make outstanding full-sun garden or patio plants. Keep evenly moist. Beautiful purple, white, pink, rose, coral, or yellow daisy flowers</div>
<div>Petunias</div> <div>Proven garden performers give color all season. Unique flower colors and patterns. Do best in high light, like lots of food and moisture. Excellent in combinations and solid plantings.</div>	<div>Angelonia</div> <div>Well suited for the hot, dry spot in your garden. Blue, coral, red, and white colors.</div>	<div>Verbena</div> <div>Large flowers in an assortment of vibrant colors. Attracts butterflies.Full sun.</div>

ORDER FORM

Hanging Baskets:		Tomatoes:	
	10” Combination Hanging Basket		Patio Tomatoes
No. ordered		No. ordered	

4.5” Potted Plants:

Buy 5, Get 1 Free ☐ YES ☐ NO

	Gerbera	Cuphea	Double Im.	Dahlietta	Coleus	Osteos.	Petunias	Angelonia	Verbena
No. ordered									

Total Cost of Hanging Baskets	Total Cost of Tomatoes	Total Cost of Potted Plants		Order Total
\$	\$	\$		\$



COLOR RUN FAQ

What do we wear?

Please dress in as much white as possible and appropriately for the weather/temperature. We will be giving out white sweatbands to participants as well.

Where are we running?

We will have a roped course to participate in starting and ending in the school parking lot.

Who is allowed to run?

Parents are allowed to run with their students if they would like, this is more of a fun run, and walking is allowed. There will not be a fastest time winner, we will go until the color runs out 😊

What do you mean color run?

At various points around the race different colored corn starch will be thrown for participants to run through. This corn starch is completely safe and non toxic and comes clean from clothes with regular detergent.

What are we raising funds for?

Students are asked to get donations up to **at least** \$20 per student. More is always appreciated.. These funds will go towards our STREAM program, which will allow us to book fun activities for the school throughout the school year. Some examples of things we've done using these funds include, garden club, Mr. K's Planetarium coming to the school, the bubble show, and Hawk Creek.

Will there be food?

We will have food options available for purchase, once these are finalized we will communicate it via news notes.



COLOR RUN

Tuesday May 27, 2025

5:30Pm

6PM Run Start

**Food Trucks and
Music on site**

**This is a school
fundraiser**

Pledge forms to follow

St. Mary's Elementary Presents:

Disney

THE ARISTOCATS

KIDS

Showtimes:

May 16th @ 7pm

May 17th @ 11am & 2pm

**** Doors open 30 minutes prior to the performance ****



St. Mary's Elementary
2 St. Mary's Hill
Lancaster, NY 14086

Music & Lyrics by

Richard M. Sherman and Robert B. Sherman,
Al Rinker and Floyd Huddleston, Terry Gilkyson

Music Adapted and Arranged and Additional Music and Lyrics by
Bryan Louiselle

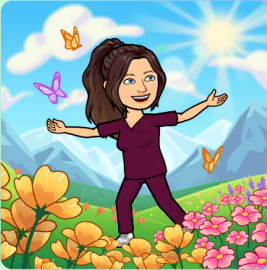
Book Adapted and Additional Lyrics by Michael Bernard

Based on the 1970 Disney film The Aristocats

Disney's The Aristocats KIDS is
presented through special
arrangement with and all authorized
materials are supplied by

Music Theatre International, New
York, NY

212-541-4684 mtishows.com

	<div data-bbox="678 249 1243 317" data-label="Section-Header"><h1>Notes From the Nurse</h1></div> <div data-bbox="886 325 1032 365" data-label="Text"><p>May 2025</p></div> <div data-bbox="732 373 1177 424" data-label="Text"><p>Dara Sirianni RN, BSN</p></div>
<div data-bbox="155 733 378 849" data-label="Section-Header"><h2>Immunization Requirements</h2></div>	<div data-bbox="396 532 542 567" data-label="Section-Header"><p><u>Reminder:</u></p></div> <div data-bbox="396 599 1343 634" data-label="Text"><p><u>Tdap</u> vaccine is required for students entering 6th grade in the fall.</p></div> <div data-bbox="396 663 1419 698" data-label="Text"><p><u>Meningitis</u> vaccine is required for students entering 7th grade in the fall.</p></div> <div data-bbox="396 728 1468 825" data-label="Text"><p>Providers and pediatricians will notify you of such during your child’s annual physical examination and these are NYS mandated in order for your child to attend school.</p></div> <div data-bbox="396 854 1398 921" data-label="Text"><p>Information has been sent home if your student still needs one of these vaccines prior to the start of the 25-26 school year.</p></div> <div data-bbox="396 951 1511 1048" data-label="Text"><p>Parents of incoming KINDERGARTENERS will be notified in writing of required immunizations, please feel free to send in the required documentation as soon as it is available.</p></div>
<div data-bbox="167 1145 318 1257" data-label="Section-Header"><h2>Outside Activities</h2></div>	<p>The warmer weather brings more time spent outdoors, the teachers do take children on walks on school property as well as outside for PE. Please make sure younger children have spare clothing in the event of an accident/ fall in the mud. <i>The Health Office does not have spare clothing.</i></p>
<div data-bbox="134 1473 352 1674" data-label="Image"></div> <div data-bbox="107 1852 375 1919" data-label="Text"><p>AS1HMA</p></div>	<div data-bbox="638 1365 1279 1634" data-label="Image"></div> <div data-bbox="751 1674 1167 2107" data-label="Image"></div>
<div data-bbox="141 2179 345 2260" data-label="Section-Header"><h2>Health Office Information</h2></div>	<div data-bbox="732 2131 1188 2166" data-label="Text"><p>Office Hours: School Days 9:30-1pm</p></div> <div data-bbox="755 2179 1127 2214" data-label="Text"><p>Phone: (716) 683-2112 ext 128</p></div> <div data-bbox="841 2228 1079 2263" data-label="Text"><p>Fax: (716) 683-2134</p></div> <div data-bbox="768 2276 1146 2311" data-label="Text"><p>email: nurse@smeschool.com</p></div>

Afterschool News

This Month In After School

We have officially made it to the final month and a half of the school year. Make sure as the school year wraps up you check the lost and found to make sure your kid has no clothes or belongings left behind, we wouldn't want them to forget it and have it left here over the summer! Speaking of the summer, make sure to check out our summercare program and sign up for your kid or kids if you have not already. Our summer care program runs Monday through Friday, June 23rd to August 15th. Hours are from 7 in the morning to 6 in the evening and we have flexible scheduling. It isn't too late to sign up so do it now before you forget! We've had such an amazing time this year expanding the after-school program and adding more activities to make it more enjoyable for your kids and hope to see many of you return for summercare and next year in afterschool care!



Afterschool Activities Dates and Times Reminder:

Running club is every Tuesday and Thursday from 2:30 - 3:15

Play Practice is every Tuesday and Thursday from 2:30 - 3:30

Garden Club (K-2nd) is every Wednesday from 2:30 - 3:15

Garden Club (3rd and up) is every Friday from 2:30 - 3:15



UPCOMING

May 1st and 2nd: No afterschool care

May 23rd: MEMORIAL DAY - No school

May 26th: MEMORIAL DAY - No school

June 6th: Prek moving up and graduation day

June 6th: Mega Raffle @ 7pm

June 11th: Kindergarten graduation

June 18th: Last Day of School grades 1-8

June 19th: NO SCHOOL - Juneteenth

ST. MARY'S ELEMENTARY SCHOOL, LANCASTER, NY- "...visible examples of Gospel living."

May
2025

Student lunches are \$3.75, and adult lunches are \$5.50. During this time, we ask that all lunches be prepaid with either cash or check made out to SME, in the exact amount. Any overage will be kept on account. All lunches are comprised of five components; protein, whole grain, vegetables, fruit & milk. In addition to the main entrée, there are three alternate choices offered daily; Turkey Sandwich, Yogurt Parfait, or Sun Butter/Jelly Sandwich. Milk is \$0.50, and may be prepaid if your student buys milk regularly. **Snack will now be served to all grades during lunchtime. No snack is ever purchased on account. Snack money must be presented at point of sale. Snacks are \$0.50-\$1.00.** If you have any questions, please feel free to contact us at heerdt@smeschool.com. We appreciate your support. Liz Heerdt & Tracy Hadsall (menu subject to change)

MONDAY	TUESDAY	WEDNESDAY	THURSDAY	FRIDAY
1 Lunch = \$3.75 2 Lunches = \$7.50 3 Lunches = \$11.25 4 Lunches = \$15.00 5 Lunches = \$18.75	6 Lunches = \$22.50 7 Lunches = \$26.25 8 Lunches = \$30.00 9 Lunches = \$33.75 10 Lunches = \$37.50	11 Lunches = \$41.25 12 Lunches = \$45.00 13 Lunches = \$48.75 14 Lunches = \$52.50 15 Lunches = \$56.25	16 Lunches = \$60.00 17 Lunches = \$63.75 18 Lunches = \$67.50 19 Lunches = \$71.25 20 Lunches = \$75.00	21 Lunches = \$78.75 22 Lunches = \$82.50 Cash or Check to SME Change Will Go On Acct
			1 Chicken Patty On a Bun Veggies, Fruit & Milk	2 Pizza Veggies, Fruit & Milk
5 Beef & Cheese Burrito Veggies, Fruit & Milk	6 Open Chicken Pot Pie Over Mashed Potatoes Veggies, Fruit & Milk	7 Goulash Veggies, Fruit & Milk	8 Chicken Caesar Salad Veggies, Fruit & Milk	9 Pizza Veggies, Fruit & Milk
12 Breakfast Sandwich (Egg, Sausage, Cheese) Veggies, Fruit & Milk	13 Chicken Alfredo Veggies, Fruit & Milk	14 Hot Dogs Veggies, Fruit & Milk	15 Popcorn Chicken Veggies, Fruit & Milk	16 Pizza Veggies, Fruit & Milk
19 Pancakes & Egg Patty Veggies, Fruit & Milk	20 Nachos Supreme Veggies, Fruit & Milk	21 Chicken Salad Wraps Veggies, Fruit & Milk	22 Sloppy Joes Veggies, Fruit & Milk	23 NO SCHOOL
26 NO SCHOOL	27 Chicken & Cheese Quesadilla Veggies, Fruit & Milk	28 Shepherd's Pie Veggies, Fruit & Milk	29 Chicken Souvlaki Bowl Veggies, Fruit & Milk	30 Pizza Veggies, Fruit & Milk